



September 23, 2021

Share with others



Dear Christ Church,

Many of us fall in love with a person...or develop a best friendship...or value a co-worker...or prize a teammate because they are so wonderfully DIFFERENT from us. They see or sense stuff or can do things that we don't (at least as well) and that seems so great!

Until it isn't.

Strangely, the very gifts or qualities that first attracted us to a person can drive us up the wall later. At first, I loved that you were so spontaneous and free-spirited, but now it drives me crazy that you are not more disciplined and organized! When we were just getting to know each other, it delighted me how funny and outgoing you were, but now I wonder when you will ever stop talking?! Why can't YOU be more like ME?

Learning to accept and appreciate the differences between us and other people is both an adventure and a challenge. This Sunday, we'll be exploring that theme in Part 2 of our new message series: **REMARKABLE RELATIONSHIPS**. If you missed Part 1, you can still [listen to it here](#).

Who do you know who might value some help in strengthening the quality of their relational connections? Could you invite them to join us for this series, in person or online?

In Christ's love,

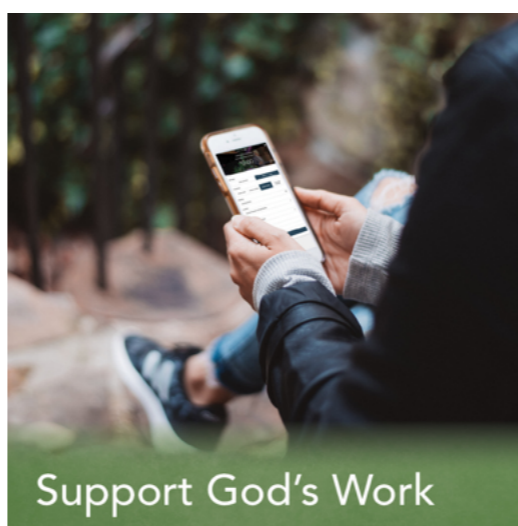
Rev. Dr. Daniel Meyer, Lead Pastor

The true measure of our lives will be the length and strength of the heart-string that ran out from our center into the lives of others, helping them to soar.



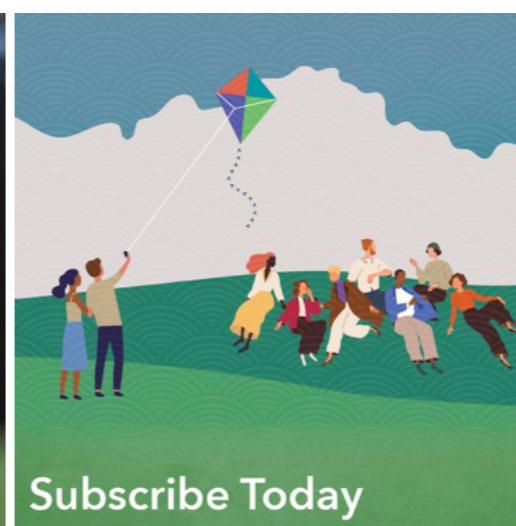
Families & Communion

October 3 will be Family Worship & World Communion Sunday. Invite a friend or neighborhood family to join you. They, too, could become a part of our church family!



Support God's Work

Your generosity makes an impact even if we don't always see it first-hand. Listen for stories in the weeks to come about how generosity has changed lives right in our community.



Subscribe Today

Engage further with Sunday's messages; **subscribe** to our weekly devotionals [here](#).

STAY CONNECTED | READ MORE ONLINE

